

A group of 12 children and two adults are posing in front of a large white sign. The sign features the text "eliminating racism" and "empowering women" in red, followed by the "ywca" logo in large red letters. The children are wearing white t-shirts with the "ywca greenwich" logo. One child is wearing a red t-shirt. The adults are wearing white polo shirts with the "ywca greenwich" logo. They are standing on a grassy area with trees in the background.

eliminating racism
empowering women

ywca

Same Mission * New Vision

2016-2017 ANNUAL PROGRESS REPORT

99
YEARS

eliminating racism
empowering women
ywca
greenwich



Building community partnerships since 1919, YWCA Greenwich is here to meet the needs of girls and boys, youth, adults and seniors.

Dear Friends of YWCA Greenwich,

Thank you for your generous support and your commitment to the mission of YWCA Greenwich. As we approach our centennial, it is both a time for reflection and an opportunity to think about how the YWCA can impact our community in the next century.

Eliminating racism and empowering women and girls remain the cornerstone of our mission. In the past year we have joined with local non-profits, the Town of Greenwich, and public and private educational institutions, to work together to address and respond to emerging challenges in these areas. United, we have engaged concerned citizens and government officials eager for a frank conversation about the rise in hate speech and hate crimes, and the role each of us can play in addressing hate-inspired behavior.

We have spoken out about women's empowerment and worked to advocate for policy issues that impact women and girls at the local, state and national level. In an effort to encourage more legislative voices for women, we hosted organizations who educate women of all political perspectives about how to seek public office, and we will be providing opportunities for further education on this process.

Domestic violence continues to be the most reported violent crime in Greenwich. Last year, YWCA Greenwich responded to 4,149 hotline and crisis calls from victims who come from all walks of life. In an effort to mitigate domestic violence in the next generation, we are increasing our focus on prevention and education. A new \$60,000 grant from the Town of Greenwich will provide funding for Violence Prevention Programs in the

Greenwich Public Schools, which will enable us to reach at risk children, as well as address the growing issue of teen dating violence.

Through the generous support of our donors, we are able to provide underserved children greater opportunities for learning and participation in sports and the arts, while giving peace of mind to working parents. Last year, we also welcomed clients from ABILIS to the YWCA with their coaches. Additionally, a new intergenerational program, pairing senior citizens with our four-year old preschoolers for periodic, supervised activities, will become a regular part of our preschool curriculum.

This annual progress report will provide even more insight into our new vision for how we will strengthen our mission and bring lasting value to our community. We welcome your feedback and participation.

On behalf of all YWCA Greenwich Board members and staff, we thank you and look forward to continuing our journey together.

Sincerely,



Karen Morstad & Mary Lee A. Kiernan



Karen Morstad, Board Chair and
Mary Lee A. Kiernan, President and CEO

ELIMINATING RACISM



In 2018, YWCA Greenwich will expand the discussion of topics important to Dr. King with a powerful panel on the issue of human trafficking.

FOCUS ON TRENDING RACIAL ISSUES



Celebrating Dr. Martin Luther King, Jr.

YWCA Greenwich is taking a new approach to its annual event honoring the legacy of Dr. Martin Luther King, Jr. In partnership with the Town of Greenwich and other community organizations, YWCA Greenwich sponsored a new program, **"Why Words Still Matter,"** an exploration of the rise in hate speech and hate crimes, as well as steps the community can take to work against hate. Steve Ginsburg, Regional Director, Connecticut Anti-Defamation League, moderated the 2017 panel discussion with Deirdre Daly, United States Attorney for Connecticut; Bobby Walker, Jr., CEO of the Boys & Girls Club of Greenwich; and Dr. Salvatore Corda, Interim Superintendent of the Greenwich Public Schools. A standing-room only crowd of concerned citizens, including high school students, attended and engaged in this critically important discussion.



“Until all women have equality and it’s extended to diversity in a broader sense, and all people in our society and our communities have equality, then none of us do.”

– Dr. Susan Toliver, keynote speaker



2017 Stand Against Racism

YWCA Stand Against Racism is a signature event for all YWCAs in the United States. The 2017 event, “Women of Color Leading Change,” drew representatives from Greenwich Town government, including the Greenwich Police Department, non-profits and clergy who work on racial justice issues, as well as concerned citizens. “We are here to raise awareness about institutional and structural racism and build a stronger community among us in fighting against that racism,” said Mary Lee A. Kiernan, President and CEO, YWCA Greenwich.

YWCA Greenwich welcomed Dr. Susan Toliver, Professor and Chair, Sociology Department, Iona College, who explored the intersection of gender and race. Dorothy Nins, CEO, The Higher Ground, led an important activity to uncover unintentional bias and its impact on racism.



The organization also doubled the size of the annual **YWCA Greenwich Racial Justice Scholarship Award**. Three students were honored at the event for their special efforts to encourage people to respect differences, promote equality and eliminate all forms of bigotry, bias and racism in their school or the community.

The 2017 honorees were Dana Wadsworth-Hutton, Greenwich Academy; Samuel Ryb, Greenwich High School; and Tiffany Evangelista, Greenwich High School.

STRENGTHENING PARTNERSHIPS WITH COMMUNITY LEADERS

EMPOWERING WOMEN & GIRLS

YWCA Greenwich is the place for those interested in empowering women and girls. Empowering women is central to programs delivered by YWCA Greenwich and drives many of our strategic partnerships, such as the Urban League of Southern Connecticut's Women's Empowerment training and the Moffly Media Women in Business event. YWCA Greenwich further empowers women and girls with policy advocacy on the local, state and federal levels, as well as by highlighting and celebrating the accomplishments of women in our community.

Putting a Focus on Young Women and Girls

- **YNet**, YWCA's youth leadership program at Greenwich High School, is focused on teen dating violence awareness and prevention. In 2017, YNet created awareness through special events such as the Homecoming Day Parade, the first ever March Madness basketball tournament, the annual YNet Frisbee Tournament, and restaurant events at Joey B's and Chipotle.

- **Girls Circle**, a YWCA program for middle school girls, promotes healthy relationship skills in an emotionally safe environment. Girls Circle encourages free expression in a place to learn problem-solving skills, identify strengths, and develop caring relationships. The 8-week program operates at all three Greenwich public middle schools.

- **Girls Circle Camp**, a YWCA summer program, is a unique two-week experience for girls entering grades 6, 7 and 8. Through a variety of fun activities, girls engage with local professional role models who encourage them to identify their unique strengths, explore personal goals and support each other while developing lasting friendships. Last year, activities included a healthy cooking class, a journalism course with a local reporter, a visit to the Greenwich Garden Education Center, and conquering the Scalzi Park ropes course.



YWCA Greenwich Advocates for Positive Change

YWCA Greenwich advocated on critical issues impacting women and girls during the legislative session in Hartford, including:

- **Domestic Violence:** A new law enhances the criminal statutes in the areas of stalking and harassment to provide better protection for victims of abuse. In addition, the legal definition of strangulation now includes suffocation, a common form of physical abuse.

- **Funding for Domestic Violence:** Trapped in the budget impasse was a bill that would help fund domestic violence services in Connecticut with a modest \$20 increase to the surcharge on marriage licenses, bringing the cost of a marriage license, static for decades, in line with surrounding states.

- **Human Trafficking:** A new law increased penalties for trafficking in persons, particularly the trafficking of children, and requires increased training for public safety, legal, health care, and public school employees for identifying and reporting human trafficking.

- **Pregnancy Discrimination:** A new law protects pregnant workers against workplace discrimination, such as requiring pregnant workers to take a leave of absence when a reasonable accommodation would allow her to continue to perform her duties.

YWCA Greenwich marked International Women's Day with an opinion editorial, "Choosing Between Abuse and Deportation," on how the prioritization of deportation of a broad range of undocumented individuals will deter victims of domestic and sexual violence from seeking help and shelter from abuse. Another opinion editorial summarized the wins, losses and missed opportunities for women and girls during the Hartford legislative session.

ADVOCATE FOR WOMEN'S RIGHTS

Highlighting and Celebrating Women

- **2016 Spirit of Greenwich Awards:** YWCA Greenwich honored twelve outstanding women for their volunteerism, dedication, contributions and commitment to enriching the lives of others in our community.



2016 YWCA SPIRIT OF GREENWICH AWARDS HONOREES: *Standing:* Mary Jacobson, Eunice Burnett, Judith Wertheimer, Susan Evans, Michelle Binnie, Dee Mayberry, Nancy Better, Anne C. Noonan, Suzanne Prunier, Robin Bennett-Kanarek, Tracy Holton, Mary Jeffery
Co-Chairs Seated: Joy Lautenbach, Jane Batkin, Lauren Walsh, Nisha Hurst, with Board Chair Eva Maria Janerus and Interim President & CEO, Mita Spilo

- **2017 BRAVA Awards Honorees:** YWCA Greenwich recognized eleven accomplished female executives who are acknowledged leaders in their fields for their mentoring of others and their commitment to both philanthropy and community involvement.



2017 BRAVA AWARDS HONOREES: *Standing:* Nisha Kumar Behringer, Romelle Jones Maloney MD, Pepper Anderson, Lila Snyder, Ruth Fattori, Jenny Storms
Seated: Denise C. Doria, Cyndi Koppelman, Anne A. Brewer, Susan M. Danaher, Stacey Tisdale

DOMESTIC ABUSE SERVICES

Intervention and Victim Services

YWCA Greenwich is the only state designated and accredited provider of domestic abuse services in Greenwich, with staff who are licensed to provide a variety of victim services. YWCA Greenwich provides 100% of its services free of charge to the victims who reach them. For 34 years, YWCA Greenwich has provided domestic abuse services, including: a 24/7 hotline, crisis intervention, safety planning, group and individual counseling for adults and children, emergency shelter, and civil and criminal court advocacy.





TRAIN MORE PROFESSIONALS ABOUT DOMESTIC VIOLENCE

Professional Training: The Domestic Abuse Services staff delivers professional trainings designed to enable professionals to spot and respond appropriately to instances of domestic violence. Organizations include the clinical staff at Silver Hill Hospital in New Canaan, CT; employees at Greenwich Hospital, Greenwich Police Department, Boys & Girls Club of Greenwich, and local hairstylists, who often see victims and their injuries.

INTERVENTION

- 4,149 hotline and crisis calls
- 3,442 in-person requests for support
- 22 adults/21 children in shelter/totaling 459 bed nights
- 589 criminal cases advocated for at Stamford Superior Court
- 2,554 counseling sessions

Community Outreach: Domestic violence is the most reported violent crime and the second most investigated crime in Greenwich. However, people are often unaware that domestic violence is happening in their neighborhood. Raising awareness is a critical component to ending domestic violence. Efforts include participating in the Greenwich Community Health Partnership and the Greenwich Youth Services Council, reaching out to other service providers like Family Centers and Kids in Crisis, participating in health fairs, speaking with public and private schools, and large group speaking engagements.

October is Domestic Violence Awareness & Prevention Month

Each October, through events, social media, and print campaigns, YWCA Greenwich raises awareness and educates the community about

domestic violence in Greenwich. A major component includes the Allstate Purple Purse Challenge, a national fundraising initiative to benefit domestic abuse services. Through the generous support of YWCA donors, the 2017 campaign raised more than \$137,000 for Domestic Abuse Services.

Father's Day Pledge Against Domestic Violence

Including boys and men in discussions about domestic abuse is an important component of the community outreach by YWCA Greenwich. In June, more than 300 men – fathers, brothers, uncles and friends – signed the Father's Day Pledge to rid the Town of Greenwich of domestic violence. The pledge was published as a full page ad in the Greenwich Time, a powerful public statement of support.

Preventing Domestic Abuse

YWCA Greenwich teaches violence prevention and healthy relationship skills at the elementary, middle and high school levels in Greenwich. **A new \$60,000 grant from the Town of Greenwich will provide partial funding for YWCA's prevention programs in Greenwich public schools, which YWCA Greenwich has delivered for more than two decades.** Programs include:

Elementary-Aged Students: Second Step teaches skills focused on empathy, impulse control, conflict negotiation, and anger management to 1st, 2nd and 3rd graders. The Second Step program has been recommended by the US Center for Disease Control as a best practice violence prevention curriculum.

Middle School-Aged Students: Prevention Education Program (PEP) teaches violence prevention to 6th and 8th graders during health and wellness curriculum in all three Greenwich public middle schools. PEP promotes healthy relationship skills, relationship boundaries, conflict negotiation, resisting social pressures, technology

and social media awareness, warning signs of abuse, manipulation and controlling behaviors, how to get help and how to help a friend.

High School Students: YNet is a best-practice youth-driven violence prevention program focusing on leadership, peer education and teen dating violence education. Teens are trained to teach their peers about teen dating violence as well as counsel peer victims. Teens also develop leadership skills and advocacy with YNet.

High School Students: Safe Dates is an evidence-based curriculum for teen dating violence prevention, meeting national academic standards about healthy relationships and how to recognize abuse within a dating relationship. The program teaches specific skills such as positive communication, anger management, values identification, how to get help and how to help a friend, including bystander intervention.



EXPAND COMMUNITY PARTNERSHIPS

Strengthening Strategic Partnerships

One agency can't do it all. YWCA Greenwich is collaborating with Town partners to provide victims of domestic abuse and their families with a full range of quality services. YWCA Greenwich created the Domestic Violence Working Group by assembling representatives from Greenwich social services agencies that provide other services that are needed by victims of domestic abuse. YWCA Greenwich leads this working group to collaborate on comprehensive responses to victims' needs, reduce duplication of services, use resources efficiently, and confer on especially complicated cases.

OTHER PARTNERSHIPS INCLUDE:

- Byram Family Enrichment Meetings
- Child Guidance Center
- Greenwich Community Health Partnership (GCHIP) – Greenwich Hospital
- Juvenile Review Board in partnership with Greenwich Police and Kids in Crisis
- Greenwich Youth Services Council
- Greenwich Public Schools
- Greenwich Human Services



Photos, from left to right:

Meredith Gold, Director of Domestic Abuse Services, providing guidance to parents about teen dating violence

Greenwich High School students and Varsity Football Coach John Marinelli at YNet training about teen dating violence and the role of athletes in the community

YNet Club students at the annual Frisbee tournament fundraiser for YNet programs

CHILDHOOD EDUCATION

“YWCA Greenwich preschool is a special place, and the children who go through the program leave with a great foundation and love of learning for a lifetime.”
– Anna Congiu, preschool parent

Preschool

The Steven & Alexandra Cohen Preschool Center provides a unique 10-month program for students aged 15 months to four years, and it is the only preschool in Greenwich that includes additional instruction in gymnastics, music, Spanish and swimming as part of the curriculum. Children from 26 different cultures are represented in our preschool.

In the 2016/17 academic year, higher enrollment required an additional Tinker Tots class to accommodate parents and keep class sizes small. A naturalist from Animal Embassy was added to the curriculum to encourage understanding and appreciation for the diversity of the planet.

An exciting new intergenerational program was piloted this year. Pairing wonderful senior citizens from Greenwich Adult Day Center with our four-year old students was an instant success. The program resulted in shared learning, cognitive development, positive social interactions, and bonding. The program will be part of the regular schedule during 2017/18 academic year.

After-school

The Kaleidoscope after-school program for children in Kindergarten through 5th grade was at capacity for the 2016/17 academic year. The combination of homework, enrichment and sports provides students with an enriching mix of physical and mental exercise. Structured programs, including STEAM, Computer Coding, Zaniac and arts, strengthen math and science proficiency and increase problem-solving capabilities, promoting future academic success.

“The Kaleidoscope program has become a critical component to the growth and success of our two boys over the last five years. Each day we are confident in the care of our children, and our minds are at ease every afternoon.” – Melissa Demmon, Kaleidoscope parent

STRIKE THE RIGHT BALANCE - ACADEMICS, ENRICHMENT & SPORTS



Summer Camps

During the summer, YWCA Greenwich is in constant motion both inside and outdoors. In 2016, preschool summer camp was filled to capacity. Camp Ta-Yi-To field trips made summer special for campers ages kindergarten to 5th grade. Trips combined learning with play at places like the Brant Foundation Museum

and the Connecticut Science Museum. A special event at the Palace Theatre brought out the creative side in our campers, and the Hartford team baseball game was a huge hit. The adventurous campers enjoyed trips to the Sky Zone Trampoline Park, Oasis Amusement Park, Rye Playland and Splash Down.

“We have had an incredible experience with our three kids at Camp Ta-Yi-To. Nothing compares to picking them up and seeing their bright, cheerful faces smiling and laughing as they told me about all the fun activities and friends they had made. Camp Ta-Yi-To prepared my twins for Kindergarten in a way no preschool could, by giving them the freedom to explore and try new things.”
— Claudia Rodriguez, parent





YOUTH PROGRAMS

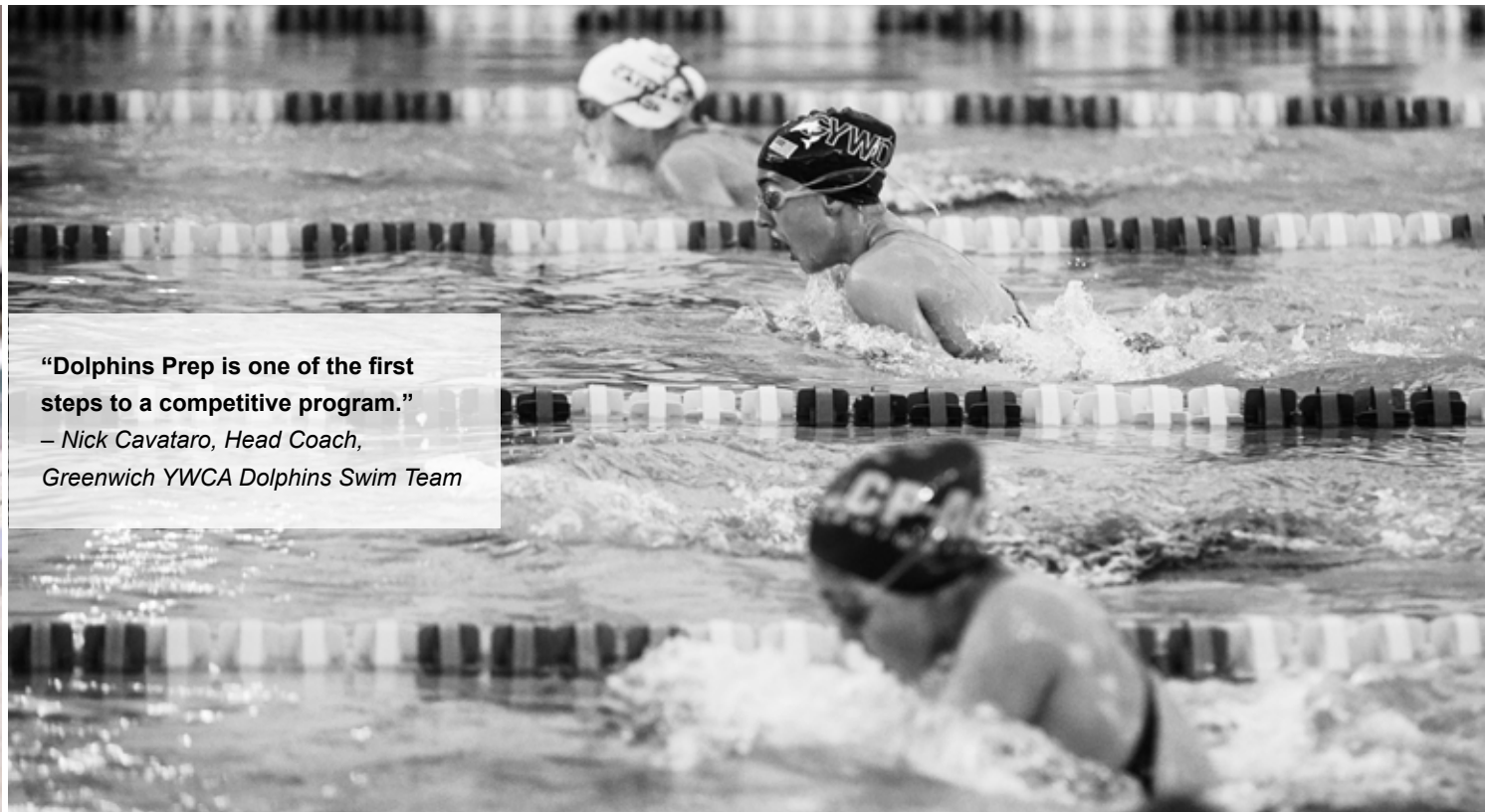
Aquatics

YWCA Greenwich provides a closely supervised, safe and encouraging environment for aquatics instruction and competition. Enrollment in swimming lessons spiked last year, and Dolphins Prep was reimagined to provide a training ground for the Greenwich YWCA Dolphins Swim Team.

The Greenwich YWCA Dolphins Swim Team achieved their fourth consecutive USA Swimming recognition as a “Bronze Medal” Club, **placing the team in the top 4% nationally.**

The team also had another outstanding year with 18 swimmers in 43 state championships. Kate Hazlett gained individual

All American Status at Greenwich Academy and also swam at the World Championship Trials in Indianapolis and US Open in Long Island, reaching the finals in 50 and 100 Freestyle and 100 and 200 Backstroke. Meghan Lynch, Sophie Jahan, Samantha Scott, and Julia Merrill all participated at the 2017 NCSA Long Course Championships in Indianapolis, and Meghan Lynch was a three event finalist at the 2017 Junior National Championships in Long Island. The team came in third in the 2017 Connecticut Swim Long Course Age Group Championships in July at Wesleyan, where a record 42 Dolphins raced.



“Dolphins Prep is one of the first steps to a competitive program.”
*– Nick Cavaturo, Head Coach,
 Greenwich YWCA Dolphins Swim Team*



Athletics & Arts

With the summer olympics still top of mind and award-winning Greenwich High School head coach, Sue Knight, providing instruction, the YWCA Gymnastics program excelled. YWCA Greenwich gymnastics was further strengthened with the generous gift of a new, state-of-the-art spring floor to support the gymnastics tumbling mat. The Emily Fedorko Foundation honored Emily Fedorko with this gift. Emily had been one of the top gymnasts on the Greenwich High School team and spent many hours practicing at YWCA Greenwich.

INVEST FOR GROWTH

“We hope this gift will encourage gymnastics to continue to grow at the YWCA and in the Town of Greenwich,” said Joe Fedorko.



YWCA Greenwich baseball and softball training continues to hit home runs, with the only indoor/outdoor batting cage system in Greenwich. Also, to give Greenwich baseball players quality, competitive teams to play for, YWCA Greenwich will be managing travel and recreational baseball teams for ages thirteen and over. Those children will also have access to the organization’s extensive baseball coaching staff.

YWCA Greenwich has also invested in new coaches for basketball and tennis. For children who have interests beyond sports, new classes have been added to the YDance program. Also, a new Broadway Song & Dance Theatre program has begun with renowned choreographer, Michelle Marceau.

Aquatics

The newest YWCA Greenwich aquatics program, Aqua-Arthritis, is an Arthritis Foundation course for adults and seniors that is proven to reduce pain and stiffness associated with arthritis. This program joins Aqua-Aerobics, Aqua-Core, swim school, private swim lessons and lap programs that provide unique routines in the water.

The Dolphins Masters Swim group, comprised of former competitive swimmers, triathletes and serious recreational swimmers, had a very successful 2016/17 season. Kevin Hoffman was a medalist at the March 2017 New England Masters Championships at Harvard University, and six swimmers participated in the July One Mile Championships at Tod's Point, Greenwich. This group practices Monday through Friday from 5:45 a.m. – 7:15 a.m. at the YWCA Greenwich pool.



MAINTAIN ADULT FITNESS AND STRENGTH

ADULT PROGRAMS

YWCA Greenwich provides a range of aquatics and fitness programs for adults.



Fitness

YWCA Greenwich provides a broad range of fitness options for adults and seniors.

Last year, YWCA Greenwich introduced Pickleball to its members. This fast-paced paddle sport has been gaining popularity, and YWCA Greenwich is one of very few organizations offering the sport in the community. YWCA Greenwich is also reaching out to older members of the community, including partnering with the Greenwich Senior Center to introduce Spin to seniors.

At YWCA Greenwich, we recognize that there are members in the community with physical challenges that are often painful. A new program is being introduced for adults interested in holistic health. MELT, a chemical-free method for managing pain, uses Myofascial Release to reduce chronic pain and improve muscle performance, joint mobility and overall flexibility.

Personal training remained a popular staple of our fitness program, with outstanding instructors like Kyle Wirtz, Director of Health and Fitness, pictured above.



PERSIMMON BALL > LIVE LAUGH LOVE

The annual Persimmon Ball raises funds to support YWCA Domestic Abuse Services, scholarships and free women's empowerment and racial justice programs. The Hyatt Regency was transformed into the New York City skyline, and the New York, New York theme flowed through the music, the food, and even the subway turnstile. The pairing of Bobby Valentine with our honorary auctioneer, Terry Betteridge, added to the fun. The introduction of 501 Auctions online bidding also improved our guests' experience. With a generous donation of \$25,000 from an anonymous donor, \$75,000 was raised through the virtual paddle raise, bringing the evening's total to **\$448,000** to support scholarships and YWCA mission-related programs.

In 2018, YWCA Greenwich will present the Persimmon Ball in a new format entitled **"Live, Laugh, Love – An Evening of Empowerment."**

We believe the message embodies this event and captures the energy around women's issues in an uplifting and contemporary manner.

Live –
TO EXIST

Laugh –
TO EXPERIENCE

Love –
TO HAVE DEEP
AFFECTION

Empower –
TO ENABLE



OLD BAGS LUNCHEON



This annual, sell out event, pairs shopping for incredible handbags with fundraising for an important cause. The 2017 Old Bags Luncheon raised **\$588,000**. All proceeds support YWCA Domestic Abuse Services, including a 24/7 hotline, crisis support, counseling, safety planning, victim advocacy, and criminal and civil court support. Jane Condon, our 2017 auctioneer, provided the right amount of levity to the event. YWCA Greenwich also appreciates Chief James Heavey and the Greenwich Police Department for their participation and support.



BOARD LEADERSHIP

2017/2018 Board of Directors

Karen Morstad
Chair

Shannon Pujadas
Vice Chair

Anne Juge
Treasurer

Terry Lamantia
Secretary

Esther Goodman
Vice Chair, Domestic Abuse Services

Judith Wertheimer
Vice Chair, Development

Stacy Zarakiotis
Vice Chair, Programs

Simi Ahuja
Nisha Arora
Jane Batkin
Brooke Bohnsack
Pamela Frame
Jennifer Frascella
Rebecca Gillan
Tracy Holton
Nisha Hurst
Anne Islan

Cynthia Leaman
Susan Reynolds Lehman
Cecilia Lieberman
Peggy Martino
Theresa Rogers Matthews
Kim Nichols
Sabrina Raquet
Kathy Silard
Lauren Walsh
Kimberly Owens Wise





YWCA Greenwich is grateful to those Board members whose terms were completed in 2017.

Left Photo:
Stephanie Schnabel,
Sareeta Bjerke,
Jan Schaefer,
Jennifer Port,
Debbie Salce,
Nicole Reynolds,
and Eva Maria Janerus.

Not in Photo:
Patricia Gallardo,
Merritt Greene,
and Christine Georgopulo.

Leadership Council

Pamela Frame & Tony Frascella

Co-Chairs

Aundrea & James Amine
Commissioner Alan Barry
Department of Human Services
Jean & Richard Bergstresser
Sareeta & Bjorn Bjerke
Natalia Broido & David Osborn
Constance M. & Walter Burke
Lynn Villency Cohen
Charles Cooper
Bea & Peter Crumbine

Karen & Scott Dillinger
Thomas Frame
Steve Ginsburg
Anti-Defamation League CT
Pamela & Robert Goergen
Merritt & Bob Greene
Claire & Ian Haft
Chief James Heavey
Greenwich Police Department
Christine Hikawa
Mark Holton
Elizabeth Jacobowitz
Eva Maria Janerus & Kevin Mowers
Karen M. Kelly

Joy & Marc Lautenbach
Phil Matthews
Debra & Michael McLaughlin
Randi Nielsen & Robert Birkenholz
Fran Pastore
Women's Business Development Council
Jill & Kevin Plancher
Lolly Prince
Carole & Charles Purse
Walter Raquet
Patty & Jim Read
Nicole Reynolds & Steve Girden
Deborah & Charles Royce

Debbie & Peter Salce
Jan Schaefer & Roy A. Abramowitz
Stephanie K. Schnabel & Brian Keil
Valerie Shultz-Wilson
Urban League of Southern CT
Edward Silard
Honorable Peter J. Tesei
Town of Greenwich
Christina Vanderlip
Maureen & Lance Vitanza
Jieun & David Wax
Lynne Wheat

DONORS

We thank you for the financial contributions that enable YWCA Greenwich to continue its important work to eliminate racism and empower women and girls. We have raised money through contributions, grants and events to support our programs and services. Every effort has been made to list names accurately. Please contact us at 203-869-6501, ext. 102, if there are any errors or omissions and accept our apologies. Again, we thank you for your continued support of YWCA Greenwich and your commitment to our important mission.

\$30,000 OR MORE

Anonymous (5)
Peter and Nancy Allatt Family Foundation
Rose-Marie and Jack R. Anderson Foundation
Connecticut Coalition Against Domestic Violence, Inc.
Dalio Foundation
Greenwich United Way
Cecilia and Jonathan Lieberman
Stamford Hospital
Town of Greenwich
Lauren Walsh
Judith and Stephen Wertheimer

\$20,000 - \$29,999

Anonymous
Brooke and Nick Bohnsack
Eunice and Rob Burnett
Paula and Robert Burton
Gabelli Funds
Greenwich Hospital
Tracy and Mark Holton
Eva Maria Janerus and Kevin Mowers
Pitney Bowes, Inc.
Stephanie Schnabel and Brian Keil
The Tudor Foundation, Inc.

\$15,000 - \$19,999

Anonymous
Simi Ahuja and Kumar Mahadeva
Allstate Foundation
Aundrea and James Amine
Jane and Alan Batkin
Jennifer and Anthony Frascella
Joy and Marc Lautenbach
Karen Morstad and Mark Goldberg
Sabrina and Walter Raquet
Deborah and Charles Royce

\$10,000 - \$14,999

Nancy and James Better
Migdalia Bonilla
Susan and Peter Carlson
Costello & Associates
Merritt and Bob Greene
Nisha and Brian Hurst
JP Morgan Private Bank
Mary and Kim Jeffery
Anne and David Juge
Macquarie Capital
Peggy and Edward Martino
Sylvia & Leonard Marx Foundation
Debra and Michael McLaughlin
Max and Winnie Rosenshein Foundation
Romona Norton
Jennifer Port and Gerald Rhine
Saks Fifth Avenue of Greenwich
The Strategas Foundation
Stacy Zarakiotis and Christos Alexandrou

\$5,000 - \$9,999

Anonymous (2)
Pepper and Carl Anderson
Nisha and Harry Arora
Katherine and Ronald Barba
Nisha Kumar Behringer and Michael Behringer
Robin Bennett-Kanarek and Joseph Kanarek
Sareeta and Bjorn Bjerke
Carlson & Carlson Inc.
Terry and Nick Cataldo
Patricia and John Chadwick
Richard Davoud Donchian Foundation
Lori Fagan
First County Bank
Patricia and Eduardo Gallardo
Chris Hikawa and David Windreich

Catherine and Blake Holden
Holland & Knight LLP
Anne and Greg Islan
Cyndi and Richard Koppelman
Jasbeena and Ralph Layman
Lily Palmer Fry Memorial Trust
Joe Lockridge
Russell Maguire Foundation
Drew Marzullo
Walter J. McKeever & Company
McKinsey & Company
Linda and Vincent McMahon
Giovanna and Brian Miller
Miller Motorcars
Near and Far Aid Association, Inc.
Kim Nichols and Chris Cabanillas
Randi Nielsen and Robert Birkenholz
Northeast Medical Group
PepsiCo Foundation
PepsiCo, Inc.
The Petit Family Foundation Inc.
PricewaterhouseCoopers, LLP
Shannon and Juan Pujadas
Nicole Reynolds and Steve Girden
Wendy Stapleton Reyes and Diego Reyes
Sue Rogers and Michael Bodson
Robert & Dale Rosen Charitable Foundation
Round Hill Community Church
Second Congregational Church
Stapleton Charitable Trust
State Street Foundation
The Velaj Foundation
Nicole Velaj
Joy Ubiña
Kimberly and J. Eric Wise

\$2,500 - \$4,999

Barbara and Thomas Arenz
Suzanne and Matt Armstrong



Bank of America
Eryn and Michael Bingle
Susan Danaher and Gary Buonanno
The Irene Buyonoski Revocable Trust
Lucy and Nathaniel Day
Mimi Duff and David Blob
Wendy and John Duryea
Fred L. Emerson Foundation
First Congregational Church of Greenwich
First County Bank Foundation
Christine Georgopulo
Meera and Andrew Gilbert
Rebecca Gillan
Laurie and Steve Girsky
Barbara and Joseph Havranek
Colleen and Philip Hempleman
Alison and Bill Hinkle
The Inner-City Foundation for Charity & Education

Lori and Allen Jackson
Mary and Martin Jacobson
Barbara and Tom Malone
Vilma and Richard Matteis
Caroline and George McBride
Mercedes-Benz of Greenwich
Leslie and John Moriarty
Jenny and Matt Murphy
The Barbara and Edward Netter Foundation Inc.
Elizabeth and Frank Newman
Sharon and Barnet Phillips
The Resource Foundation, Inc.
Irene Ricci and Damien Marshall
Lori Samuel
Jane and Paul Shang
Heidi and Scott Smith
Laura and Glenn Tobias

DONORS

\$1,000 - \$2,499

Anonymous
Americana Manhasset
AmeriCares
Arch Street, The Greenwich
Teen Center
Ellen and John Avellino
Laura and Scott Beck
Alexandra and Seth Bergstein
Susan Bevan and Anthony Daddino
Ipashri and Piyush Bharti
Leslie and Ashish Bhutani
Michelle and John Binnie
Elizabeth and David Boutry
Brunswick School
Calico Burton
Patricia and Gil Caffray
James Carroll
Lynne and Anthony Carvette
Christ Church Greenwich
Chubb & Son
Jane Condon and Kenneth Bartels
Bonnie Copp
Jill and John Coyle
Laura and Stephen Cunningham
Anne and Alec Dawson
Roberta and Steven Denning
Robert Doran
Laura and David Erickson
Ernst & Young LLP
Fairfield University
David Feldman
Howard and Amy Finkelstein
Foundation, Inc.
Mairead and David Finn
Vicki Finnerty
Megan Flanigan
Pamela and Thomas Frame
Icy and Scott Frantz
Bill & Melinda Gates Foundation
Alex Gaudalet
Jennifer Gerstel-Ringelstein and
Geoffrey Ringelstein
Esther and Marc Goodman
Greenwich Academy
Greenwich Pediatric Dental Group
Lauren and Keith Hagerty
Judith and Matthew Harrison
John and Kelly Hartman Foundation

Sandra R. Herman
Judy Higgins
Barbara and Steven Hindman
Suzanne and Richard Hogan
Mary Helen and Jeffrey Holzschuh
Jerry Hupy
Anne Marie and James Hynes
Phyllis Jacob
Peggy and Scott Kalb
Joe Kaliko
Kaye & Hennessey, LLC
Karen and Dennis Keegan
Mary Lee and Jack Kiernan
Sumit Kumar and Prabhjot Grewal
Terri Browne Kutzen and Tom Kutzen
Shelly Tretter Lynch and Ralph Lynch
Theresa Rogers Matthews and
Phil Matthews
Dee and Richard Mayberry
Dolly and Charles Mayer

Susan McSherry
Heidi and Thomas McWilliams
Alice Melly
Laura Michaels
Sally and Robert Michler
Melissa and Robert Mittman
Joan Mockler
Patricia and Jeffrey Murphy
National Network to End
Domestic Violence
Nichols MD of Greenwich
Deborah Nielsen
Caitlyn Niv
Joan and Lucio Noto
Anne and David Ogilvy
Margaret O'Neal
Julie and Douglas Ostrover
Dawn and Richard Papalian
Lee Parfrey
Lynne and Richard Pasculano

Joy Patafio
Penn Oberlander Family
Foundation, Inc.
Emma and Mark Pennington
Jill and Kevin Plancher
Pond Family Foundation Trust
Csilla and John Prunier
Pilar Ramos and Kaihan Krippendorff
Shannon Retzke
Ryan Reynolds
Jordan and Noah Rhodes
Mary Jo and Bill Riddle
Sharon and John Rockefeller
Norman Roth
Rosemary Ryan
Debbie and Peter Salce
Jan Schaefer and Roy Abramowitz
Shipman & Goodwin LLP
Siegel, Reilly & Kaufman, LLC
Kathleen and Edward Silard
Jane and Lloyd Sprung
Kathleen and John Stack
Vicki and Harold Tananbaum
Alka and Nikhil Thukral
Gail and Seth Turkeltaub
Christina Vanderlip
Maureen and Lance Vitanza
Jieun and David Wax
Valerie and Steven Wayne
Wells Fargo Advisors
Elisa and Thomas Wilson
John Winthrop Charitable Trust
Wendy Wright
Alexandra and Kevin Wyler
Chris and David Zadik
Joyce Zee and Andrew Morgan
Felice Zwas and Sara Gallen

Tami and Michael Berczuk
Nancy and Andrew Booth
Breast Cancer Alliance, Inc.
Joan and Scott Brown
Bruce Museum, Inc.
Michelle and Chris Bucaria
Charles Cherington
Brita and Tibor Darany von Regensburg
Lauren Driscoll
Stephen and Jennifer Errico
Family Foundation
Kristy and Robert Harteveltd
Blanca and Sunil Hirani
The Betty Ruth and Milton Hollander
Foundation
The K Foundation
Steve Lapin
Patricia Lunka and Gary Berkman
Joan Lynch and Marc Wolpers
Diane Matt and Chris Ohl
Christian Michalik and Kim Fulton
Kim and Jerry Miller
Kim and Lawrence Motola
Lindsay and David Ormsby
Eva Stina Pehrson
Jamie Philippopoulos
Christy Prunier and David Doss
Carole and Charles Purse
Mary and Richard Radcliffe
Elsa Raskin
Keith Raskin
Sara and Gene Rawson
Reznik Family Charity Fund
Jan Riley
Lori and Phil Robinson
Natalia and Martin Robredo
Katherine and Christian Roth
Bettina and John Routh
Patricia Rube
Alma Rutgers and Don Snyder
Carol and Robert Santora
Shannon and James Sawyer
Schinto Dental
Sarah Schreder
Glenn and Hal Shaw
Constance Shields
The Shumway Foundation
Anna and Laurence Simon
Kristyna Sipko



\$500 - \$999

Anonymous
Marilyn and Stuart Adelberg
Hamid Asgari and Ariadni Karga
Michael Astorino
Monique Bahadur
Marianne Ho Barnum and
William Barnum
Eileen and Steve Bartels
Andrea and Chris Beall
Carl Bennett

DONORS

Jill and Kevin Smith
Cozata Solloway
Lynda and William Steere
Stone Harbor Project Advisors, LLC
Lisa and Scott Stuart
Carol Swift
Stacey Tisdale and Chris Gatty
Liz and Sal Tommasino
Total Marine
Roxanne and Hugh Vanderbilt
Luz Wals and Roberto Magana
Louisa and John Winthrop
Nancy Wright
Jordan Yarett
Gina Zambrana
Nancy and William Zisson
Carol and Timothy Zuckert

\$250 - \$499

Nancy and Elliot Alchek
Debbie Alza
Lucy Anda
Cynthia and James Anderson
Anne and Peter Angevine
Audubon Connecticut
Kim and Neil Augustine
Avon Theatre Film Center, Inc.
Carolyn Baek and Ken Schuhmacher
Lynn Baillargeon
Susie Baker
Jennifer and Michael Baldock
Jill Barile
Lindsay and Patrick Barth
Maya Belubekian and Levon Kazarian
Tiffany and Jerry Benincasa
Agneta and Eggert Benzon
Susan Bernhardt
Dick Blair
Kristen and Ken Bodenstein
Sebastian Boulan and Melissa Galligan
James Boutelle
Rita Bozza
Jane and Alexander Brash
Cathy Breck
Stacey Burton
Catherine Carlson
Robyn Carpenter
Abraham Cary
Agatha Chang and Viva Chu

Wendy Charhon
Joselynn and Lawrence Chua
Patricia and Stephen Clark
Alexandra Codraro
Donna Coletti and Nevio Murljagic
Lucy and Douglas Conrod
Nancy Cooper and Andreas Duus
Shelley Cubiner
Nancy Cuniffe
Elizabeth Cuticelli
Amy Dana and Joseph Profaci
Davies Family Foundation
Diane and Ward Davol
Ilya Degter
Ann and Samuel Deibler
The DeLuca Construction Company
Jean and Ralph DeNunzio
Marie-Josée Desnoyers and Giovanni Visentin
Ann and Garrett Dietz
Jocelyn Dimsey
Amy and Jack DiTeodoro
Karen and James Drakos
Alice Duff
Debbie Dunlop
Wendy Dye and Christopher Winget
Mary Efstratiou
Haley and Joseph Elmlinger
Kelly and Francis Ennis
Diana Evans
Fairfield County's Community Foundation
Elizabeth and Bill Fallon
Family Centers Inc.
Catherine and Michael Farello
Ruth Fattori
Maryellen and Edmund Feeley
Margaret and Josh Feldmeth
Deborah Fields
Rita and Howard Fine
Lisa and Scott Fischer
Julie and Thomas Flakstad
Livvy and Douglas Floren
Jillian and Christopher Foster
Jane and Paul Frank
Victoria and Joshua Frank
Tripp Freeman
Kristen Galef
Kathy Georgas

Bridget George
John and Melissa Gibbons
Ali and Kenneth Goldstein
Francisco Gonzales
Nancy and Roberto Gonzalez
Amy and Sidney Goodfriend
Danielle Goodwin
David Gordon
Judy and Al Gordon
Marilyn and Lindsay Gordon
Julia Graham
Eileen and Patrick Grasso
Shannon and Daniel Green
Greenwich Library
Tracy Grossman
Jeannette Gugelmann
Ebba and Georges Grumieaux
Myrna Haft
Lynne Haven and Paul Rinaldi
Melissa and Carney Hawks
Eleni and Peter Henkel
Jevera and William Hennessey
Mary Ann Henry and Peter Atkins
Jeff Higgins
Susan Huang and Oliver Kane
Anne and Robert Ivanhoe
Mary and Martin Jacobson
Juanita James and Dudley Williams
Janney Montgomery Scott
Leslie Johnson
Shelly and Luke Johnson
Joan Kadlec
Amita Kalra
KAF Manufacturing Company, Inc.
Karen M. Kelly
Patricia and Philip Kemp
Janine and Robert Kennedy
Anne Kern and Tim Mund
Roberta and Albert Kestnbaum
Gail and Victor Khosla
Barbara and William King
Rebecca Kirkhoffer
Joan and Peter Knudsen
Angeles Kozlowski
Cheryl Kozlowski and Jonathan Packard
Deborah and James Lash
Laurel House
Gale and Robert Lawrence



Erica and Gene Lee
Yeenee Leri
The Tammy and Jay Levine Foundation, Inc.
Abigail and Guy Levy
Linda and Richard Lewis
Patricia Litzen
Linda and Willy Liu
Elizabeth and Joseph Longmore
Melinda and Stephen Lorenz
Ana and Fernando Lourenco
Julie and Robin Lowe
Kerrith Mackay
Susan and William Mahoney
Kate Majd
Kathy and Julian Markby
Lorraine Capone Marshall
Peggy and Edward Marx
Lisa and Gary Matthews
Lauren and Andy Matthiesen
Diddle and Malcolm McAllister
Jackqueline McLean
John D. McNamara Rev Trust
Judy and Karl Meyer

Marsha and Kenneth Miffilin
Sheryl and Michael Miller
Karen Minerva
Amy and Patrick Mooney
Bernadette Mosellie and Francis Serbaroli
Heather and Dan Mosley
Diane Nichols
Anne and Charles Niemeth
Elizabeth and David Nixon
Ana and Jens Nystedt
Izabela and Daniel O'Brien
Christina and Niall O'Donnell
Sheila and Dan O'Donnell
Doris Ohlsen
Jennifer Openshaw
Kate and Bart Osman
Mairead O'Sullivan and Arthur Landi
Tammy and Daniel O'Sullivan
Crystal Ottaviano and Juan Zuniga
Ellen and Christos Papanicolaou
Steul Pardanani
Suzanne and Andrew Peisch
Linda and Thomas Petrone

DONORS

Anne and Freidrich Pfetsch
Nerlyn and Douglas Pierson
Linda and Richard Porter
Donna Praiss
Danielle Prunier and Steve Herman
Suzanne Prunier
Virginia Pursche
Putnam Indian Field School
Lisa and Bruce Quackenbush
Lauren and David Rabin
Morgan Rafferty
Patty and James Read
Pam Reimers
Barbara Rhodes
Karen and Andrew Richard
Dedee and Gerald Rigg
Nancy Risman
Ann and Sean Robertson
Elizabeth Roddy

Andrea and Marc Rogers
Dana and Greg Rogers
Michele Ronis and Jay Chalnack
Jean and Jeff Rose
Virginia Rowan
Marisol and Paul Ruh
Charlie Sachs
Shelby and John Saer
Kimberly and John Salib
Diane and C. David Sammons
Donna and Richard Santarosa
Kerra and Frank Sarcone
Elizabeth Savage
Jeanne and Robert Savitt
Elizabeth and John Schinto
Stephen Schiz
Lauri Scoran
Service Management Group, LLC
Dawn and Joseph Servidio

Lindsay and Michael Sheehy
Keech Shetty
Regina and Konstantine Smaguine
Constance and Arnold Stancell
Emily and Scott Sternberg
Ashley and Andrew Stewart
Davidde and Ronald Strackbein
Jane and Robert Stricker
Helene Sullivan
Eileen and Richard Tang
Samuel and Gail Telerico
Karen Terrell
C. Bowdoin Train
Lucinda and Daniel Tredwell
Patricia and Jack Trout
Margot and Charles Tusa
University of Saint Joseph
Janette and Frederik Van Der Weijden
Marcela Vittar and Daniel Maldonado
Elizabeth and Michael Vitton
Elizabeth Walker
Jeanette and Bennie Wallace
Jinyan Wang and Dizhuo Zhu
Barbara Ward and John Andrews
Sandra and Stephen Waters
Nancy Weissler
Nina and Thomas Weld
Westchester Wildcats
Jane and Alan Weyl
Lynne Wheat
Kirby and Joseph Williams
Nancy Sarnoff Williams and
Scott Williams
Bayard Winthrop
Allison and Steven Wolowitz

UP TO \$249

Anonymous
AAA Northeast
Suzanne Aaronson
Susan Adamsen
Natalie and Jon Adee
Carole and Gordon Adsluf
Herwinder and Sarbjit Ahuja
Darrick and Elizabeth Antell
Maxine Armstrong
Susan and Perrin Arturi
Penny Ashford

Erin Asxhettino
Kristen and Brent Atkins
Trupti Awati
Paola Baez-Gomez and Thomas Urda
Claire Bailey
Christine Baker-Rodriguez
Ellen and Robert Barolak
Kat Beevers
Margaret Behr and Robert Sheets
Kathryn Ann Bella
Geraldine Benincasa
Nicole Benincasa
Jeanne and John Bennett
Gail and Joseph Berardino
Jean and Richard Bergstresser
John Bianrosa
Ilene Blechner
Eleanor and Edward Bloom
Nana and Joseph Boateng
Margaret Bondy
Alyssa and Tom Bonomo
Lisa Boots
Mari Bottone
Monica and Mark Bourgie
Margaret and Edward Bragg
Tracy Brank
Janine and David Braun
Nancy Broadbent
Lauren Brown and Henric Persson
Michael Brown
Susan and Jeffrey Brown
Wendy Browning-Lynch and
Randall Lynch
Emily Burns
Esther and Michael Bushell
Joanne Butler
Ronnie Caffrey
Elizabeth Callaway
Linda and Mark Camel
Judy Campisi
J.P. and R.J. Carella
Marcia and Gerard Carino
Milton Chavarriaga
Josephine Chen and Jeffrey Cooper
Robin Chenot
Greg Chianetta
Children's Learning Centers
of Fairfield County
Doreen Chimblo

Chipotle
Maryanne and Gary Ciccone
Cristina Clark
Martha and James Cobbs
Julian Coles
Connecticut Against Gun Violence
Susan and Kenneth Conover
Ruth Coplin
Hilary and David Corbin
Seonaid Corbishley
Sabrina Corney
Tina Courpas
Patreece Creggan
Gina Cristino
Jean and John Crocco
Bea and Peter Crumbine
Maureen and Dennis Crumbine
Diane and Lee Cusham
Maureen and Lawrence Czasonis
Bradford Daley
Trisha and Patrick Dalton
Laura and Drake Darrin
Mary E.P. Davies
Alison Davis
Laura Davis
Michael DeAngelo
Susan and Doug Decker
Sherry and Cort Delaney
Julie Delpoit
Christine DelRe
Alex DeLuca
Crissa Diaferio
Estela Diaz
Ralph DiClemente
Karen and Scott Dillinger
Jessie DiMuzio
Vicky Ditri
Judith Donahue
Elizabeth and Philip Douthit
Minnie Dubilier
Terry Dunahue
Sari Dweck
Molly and David Dye
Danielle Eason
East Tennessee State University
Julie Eiben
Janet Eliopoulos
Anne Emberg



DONORS

Christopher Emerson
Courtney and Jonathan Evans
Elizabeth Evans
Susan and Robert Evans
Exxon Mobil Foundation
Laura Fairbrother
Kourtney Fall
Renee Farrell
Killeen and Joseph Faughnan
Elicia Felix
Field Goods, LLC
Ana Figueiredo
Figure Skating in Harlem
Bernard Fineman
Helen and Daniel Fitzpatrick
James Fitzpatrick
Mary Fjelldal
Rachel Fjelldal
Mary Fontaine
Pamela Fontana
Karen and Michael Franovic
Janet and Michael Freiheit
Marjorie French
Barry Frey
Anne Friday
Lynn Elise Friend
Amy and William Froehlich

Jennifer Fry
Jennifer and William Fullilove
Meghan Gafaell
Eugenie and Michael Galbreath
Katie Gallagher
Florence Gaselli
Catherine and Charles Gates
Frank Gaudio
Gillian and Ben Geiger
Gina Genuario
Sheryl and Philip Gerard
Karen Giannuzzi
Brittnay Gilligan
Paige Gilligan
Sharon Gilligan
Elizabeth Gilmore
Go Figure Barre Studios
Yajaira Gonzalez
Dahlia Grace
Elizabeth Grant and Mark Pruner
Virginia and Taylor Gray
Louisa and Warren Greene
Greenland Landscaping
& Masonry Inc.
Greenwich Infinity
Florencia and Francisco Grether
Karen Grinthal

Max Grover
Jessica Guff
Elaine Guglielmo
Swati Gupta
Claire and Ian Haft
Mary Ann and Robert Haidinger
Helen W. Hall
Tricia Hanley
Bonnie Hann
Jeanne and Nelson Hansford
Mary Hardy
Dana Harmon
Marilyn Harris
Casie and John Hart
Claudia Hawks
James Hawks
Constance Hewitt
Colleen Hines
Vicki Hoffman
Pamela Hoiles
Kelly Hondru
Mary Jane and Thomas Hood
Colette and Gary Howe
Jade Hoyen
Jennifer Hrbek
Virginia and Thomas Hughes
Angela Hyland
Lila and Melvin Imas
Lori Jabara
Irene Jacobs
Jesse Jacobs
Jean Marie and Douglas Jamieson
Maureen Jewell
Stephanie Johnson
Jolie Gotique
Estelle Clausen Jones
Julie and John Jones
Robyn Jones
Jennifer and Thomas Joyce
June Marks Revocable Trust
Patricia and James Kalashian
Elinor Kaplan
Kristin Keller
Cynthia Kellner
Ginna Boyle Kelly
Leah and John Paul Kennedy
Ann Kepcke

Margaret and Steven Kessler
Heather Khuu and Jae Choi
Katherine Kidder
Jodie and Robert King
Fiona and James Kingery
Marilyn A. Kipp
Cynthia Kirk
Natasha Kloster
Samantha Knapp
Page and John Knox
Kolbrenner & Alexander, LLC
Beth and Sanford Kornberg
Michael Kovner and
Jean Doyen de Montailou
Cheryl Kozlowski
Kristen and Thomas Kratky
Lisa and Warren Lagerloef
Kim and Brian Lamb
Michael Landsman
Miriam and Donald Landsman
April and Jonathan Larken
Flavia and Peter Lasalandra
Regina Laudieri
Yanique Laurent
Anthony Lavery
Vanessa Lavery
Anne and Kevin Lawrie
Christine and Andrew Lazar
Elizabeth and Mark Lazarus
Junixa Lazu Henry
Fernanda and Cristiano Leao
Danielle LeBrando
Felitia Lee and Stephen Opuszynski
Mamie and James Lee
Kay and James Leisenring
Florence Levison
Patricia and Toby Lewis
Lexus of Greenwich
Jackie Lezette
Meg Lezette
Rachel Liersch
Lori Light
Jennifer Linardos
Olga Litvinenko
Helen and John Lobrano
Carolyn and James Lockhart
Elizabeth and Ernie Lombardi
Lisa and Mark Lonnegren

Felix Lopez
Diane Lorenzut and William Knapp
Christine and Jim Lucsky
Gretchen and Marty Lupinacci
Stephanie Lyon
Robert Lyons
Keri Maccoll
Kyle and Cameron MacDougall
Shirin and John Madden
Shilpa and Sandeep Malhotra
Barbara Malone
Romelle Jones Maloney
Liz Manfredo
Domenica Manuli
LouAnn Marsico
Jan and Don Marchand
Dominique and William Marder
Terry Mardula
Maria Livesay Salon LLC
Ross Marino
Dana Marnane
Lorraine Marshall
Nancy Marshall and Andy Sareyan
Cro Martin
Dorothy and Gerald Mayfield
Ethel McAllister
Daniel McCormack
Amanda McCoy
Kristine and Glenn McCue
Patricia and Miles McDonald
Marcie McGuire
Megan McKeever
Rhonda and Kevin McKeever
Janet and Michael McMahon
Patricia and Robert Mendelsohn
Rosalba Merchan
Barry Metz
Gail Mills
Katherine Minchin
Beth and Antonio Miranda
Donna and Jack Moffly
Jonathan Moffly
Adriana Molina
Cecilia and Robert Morgan
Barbara and Tim Morris
Joanie Morrison
Apolinar Mota



DONORS

Carol Muller
Marianne Musalo-Kown
Luann New
Kaisa Newhams
Andra and Elliot Newman
Joan Newman
Phyllis and Bruce Nicholas
Katie Niekraash-Schwartz and
Christopher Schwart
Reena Ninan
Gretchen and Todd Nolte
Melissa Nook
Edmund R. Noonan
Wells Noonan
Sara Nowak
Willow and Timothy Oberweger
Ingrid O'Ferrell
Marybeth O'Keefe
Gail and Edward O'Leary
Loretta and John O'Leary
Jennifer Opebsha and
Durant Schwimmer
Elizabeth and Edward O'Reilly
Measi O'Rourke
Orthopaedic & Neurosurgery
Specialists, PC
Sarah and Joe Osnoss
Carmen Osorio
Vilma Osorio
Michael Owens
Karen and Charles Packard
Emily Ann Palmer
Panwy Foundation, Inc.
Kim Papachristou
Richard Parles
Fran Pastore
Marci Paulk
Michelle and Frank Pennino
Monica Perdono
Patricia Perle
Michelle Perpetua
Kimberly and Jack Peters
Paula Petraglia
Hila Phillips
Adriana and Robert Phillips
Geri Pierson
Paulette Piper
Louis Pittocco

Planned Parenthood of Southern
New England, Inc.
John Polera
Limor and Frank Pompa
Romano and Vincenza Pompa
Michelle Posada
Mary and Joseph Powers
Marilyn and Piero Pozzi
Precision Pool and Aquatics
Lolly Prince
Lillian Pyne-Corbin
Natalie and Ronald Quigley
Lynn Quinn
MaryAnne Rasmussen
Tanish Rawlinson
Kathy Raymond
Redniss and Mead
Donna Reed
Leslie Riddle
Av Rivel
River House Adult Day Center
Maria Rivero
Chrissy and Kelly Robinson
Rachel and Adam Robison
Howie Roitman
Monica Rolston
Lori and Joseph Romano
Kathi and John Rosafort
Jennifer and Richard Roth
Jerry Rothman
Tasha Royal
James Rudnet
Danielle Rudolph
Alice and David Ruf
Anna Ruiz
Barbara G. Bzura Sable
Kathryn and Bruce Sahrbeck
Heather and Jeff Sahrbeck
Cindy and Daniel Saleeby
Barbara and Evan Salop
Rosalia and Frank Sanni
Melissa and Robert Santangelo
James Santaguida
Sylvia Sarkisian
Sharyn and Richard Sarner
Allison Sasson
Carolyn Saunders
Beth Savage

Judy Schedler
Susan and Tim Schieffelin
Barry Schneirov
Gloria and Howard Schwartz
Lisa Schwartz
Kyu and Peter Scott
Frank Scotti
Erin Seader
Stephanie Seaman
Judith Servidio and Heather Natale
Karen Shaffer
Margaret Shaffer
Jim Shapiro
Carol and Robert Sharp
Bethany and Scott Sharp
Paige Sharps
Phyllis Sheridan and Paul Barbian
Shop Rite
Maria and Rafael Silveira
Cheryl and Raymond Simon
Claire Simonelli
Tim Slaughter
Geri Smiles
Angela Smith
Arthur Smith
Eleanor and Stephen Smith
Lila Snyder
Jennifer Solimine
Splurge! Gifts
Jacqueline Stam
Constance and Arnold Stancell
Cathryn and Alan Steel
James Steen
Elizabeth Stefano
Randy Stevens
Suzanne Stillwell
Jenny Storms
Deborah Streck
Katherine and Seth Strickland
Sylvia Striker
Malgorzata and Adrian Stroie
Stan Sutula
Cathy Swei
Shaun Swersky
Kathryn Tabner
Jill Talbot
Bevan Talbott
Denise Tamayo

Heather and Dave Tarifi
Mohamed Tarifi
Sylvia Tarifi
Leslie Teichgraeber
Monika Tello
Katherine and David Tenney
Neelima Thakur
Constance Tierney
Michele Tierney
Marilyn Timbers
Amy Tisler
John Toner
Eileen and Paul Toretta
Alina Tugend
Melissa and Tony Turner
Joyce and Carl Turnipseed
Margot Tusa
United Way of Coastal Fairfield County
United Way of Greater Waterbury
Elizabeth and Herve Van Caloen
Diane Van Lear
Jeanne Van Seiver
Almudena Vicens and Soren Huba
Neerja Wadhwa
Katina Wall
Laura Walker

Noelle Ward
James and Tara Waters
John Waters
Beverly Watling and John Watling
Kim Watson
R.W. and J.L. Wayne
Sara Wayne
Susan Wayne
Ximena Weiss
Jude Westerfield
Barbara White
Diana and Anthony Whyte
Susan and Peter Williams
Joscelyne Wilmouth
Vanessa Wilson
Elizabeth and Joseph Winget
Annick Winokur and Peter Gilbert
Dee and Herbert Winokur
Deborah Winthrop
Janet Winschel
James Wisecup
Garrick Wong
Ping Yang
Valerie and Aleksey Yereimin
Joanne Zammit
Ronald Zate



GIFTS IN KIND

Anonymous (2)
 '21' Club
 59E59 Theatres
 AAA Northeast
 AMC Theatres
 Arcuri's Pizza
 Aundrea and James Amine
 The Arthur Murray Grande Ballroom
 of Greenwich
 Aux Delices
 Baccarat, Inc.
 BackCountry Jazz
 Eunice Bae
 Ballroom Elegance Dance Studio
 The Beauty Project
 The Brazilian Court
 Darlene Banks
 Jill Barile
 Jane and Alan Batkin
 Mary Ann Belanger
 Frances and Jim Berger
 Susan Bernhardt and David Sternberg
 Betteridge Jewelers
 Natalie and Win Betteridge
 Senator Richard Blumenthal
 Elizabeth and David Boutry
 Boxcar Cantina
 Bravo's Limousine
 Francesca Breheney
 Bridgeport Bluefish
 Fareen Butt
 Byxbee, Finn & McLaughlin
 Susan and Peter Carlson
 Centro Ristorante & Bar
 Patricia and John Chadwick
 Chicken Joe's
 Joselynn and Lawrence Chua
 Lynn Villency Cohen
 Steven & Alexandra Cohen
 Foundation
 Marlene Contreras
 Connecticut Ballet
 Trisha and Patrick Dalton
 Dance it Out
 Brita and Tibor Darany
 von Regensburg
 Lucy and Nathaniel Day

Dior
 Dooney & Bourke, Inc.
 Doral Arrowwood
 Jennifer and Stephen Errico
 Laura Fairbrother
 Fairfield County Look
 The Emily Catherine Fedorko
 Foundation
 Phyllis and Daniel Finn
 First County Bank
 Fjord Fish Market and Catering
 Flourish
 Pamela and Thomas Frame
 Frederic Fekkai Salon
 Gabriele's Italian Steakhouse
 Patricia and Eduardo Gallardo
 Garden Catering -
 Old Greenwich, LLC
 Garden Education Center
 of Greenwich
 Garelick & Herbs
 Christine Georgopulo
 GlamBlow
 Gofer Ice Cream, LLC
 Gourmet Chef Services, LLC
 Avril Graham
 Merritt and Bob Greene
 Greenwich Free Press
 Greenwich Magazine
 Greenwich Medical Skincare
 & Laser Spa
 Greenwich Pediatric Dental Group
 Greenwich Symphony Orchestra
 Greenwich Town Party
 Greenwich Water Club
 Andrew Grunow
 Gut Reaction Tennis
 Claire and Ian Haft
 Linda Hepworth
 The Hermitage Club
 Constance Hewitt
 Mary and Jim Himes
 Hoagland's of Greenwich
 Hobbs London
 Suzanne and Richard Hogan
 Catherine and Blake Holden
 Tracy and Mark Holton
 Mary Jane and Thomas Hood

Celia and Brian Hopkinson
 Horseneck Wines & Liquors
 Marijane and Bradley Hvolbeck
 J House Greenwich
 Jane Mogel Interior Design
 Eva Maria Janerus and Kevin Mowers
 Jiffy Dry Cleaners & Shirt
 Launderers Inc.
 Jolie Gotique
 Juliska Flagship Store
 Amanda Karnsombob
 Kate Spade & Co.
 Mary Lee and Jack Kiernan
 Gail Kirchoffer
 Elizabeth Koppelman and
 Shan Hanigan
 Kim Kristoff
 Terri Browne Kutzen and Tom Kutzen
 Lake Compounce
 Landfall Navigation
 Tanya and Paul Larson
 Joy and Marc Lautenbach
 Le Penguin
 Le Salon Bleu
 L'Escale Restaurant
 Bridget Lowe
 Patricia Lunka and Gary Berkman
 Peggy and Edward Marx
 Matt Miller Events
 Theresa Rogers Matthews and
 Phil Matthews
 Mavis Discount Tire
 Kim and Mark Messier
 Miller Motorcars
 Mint Theater Company
 Moderne Barn
 Donna and Jack Moffly
 Karen Morstad and Mark Goldberg
 Linda and Stephen Munger
 Mystic Seaport
 National Football League
 Neiman Marcus Westchester
 Lisa Neubardt
 New Wave Salon
 Northeast Medical Group
 NOW Tennis
 The Ocean House



Dee Ocleppo
 Mairead O'Sullivan and Arthur Landi
 Lee Parfrey
 Pasta Vera
 Joy Patafio
 Eva Stina Pehrson
 Rachel Girouard Photography
 Ralph Ferrara Catering
 Sabrina and Walter Raquet
 The RealReal
 Regency Limousine, Inc.
 Richard's of Greenwich, Inc.
 Riverside Towing
 Robin Poska's Ballroom Magic
 Alison Rooney
 Deborah and Charles Royce
 Rudy's Executive Transportation
 Saks Fifth Avenue of Greenwich
 Debbie and Peter Salce
 Stephanie Schnabel and Brian Keil
 Gloria and Howard Schwartz
 Bernadette and Paul Settelmeyer
 Phyllis Shustak
 Anna and Laurence Simon
 The Ski and Scuba Connection LLC
 Southern Connecticut
 Dermatology, PC
 Lara Spencer
 Splash Car Wash
 Splurge! Gifts
 St. Regis New York
 The Study Fine Wine and Spirits
 Stamford Hospital
 Stamford Symphony

Anna Sternberg
 Sarah Summons
 Lis Suppo
 Olga Sweet
 Leigh and Mark Teixeira
 Threads and Treads
 Alka and Nikhil Thukral
 Tiffany & Co., Greenwich
 Tiger Lily's
 Town of Greenwich Police Department
 Tra Di Noi
 Trina Turk
 Elaine and ChiChi Ubina
 Valbella
 Val's Putnam Wines & Liquors
 Korrine and Douglas Van Ness
 Almudena Vicens and Soren Huba
 VIK Hotel Cayena Beach
 Lauren Walsh
 The Wall Street Theater
 Walter J. McKeever & Company
 Warren Tricomi Salon
 Water Jewels Gallery
 Judith and Stephen Wertheimer
 Westport Country Playhouse
 White Tiger Tae Kwon Do
 Laura Wilcock
 Wildlife Conservation Society
 Windham Mountain Resort
 Winston Flowers
 Leslie Yager
 Yves Saint Laurent
 Z Hospitality Group

HONORARIUM + IN MEMORIAM

We are very grateful to those who chose to honor or memorialize their loved ones by donating to YWCA Greenwich.
We are proud to recognize them here.

IN HONOR OF

Rose-Marie Anderson

Rose-Marie and Jack R. Anderson
Foundation

Robin Bennett-Kanarek

James W. Carroll
Amy DiTeodoro
Fairfield University
Kelly S. Hondru
Joanie Morrison
Sharyn Sarner
Siegel, Reilly & Kaufman, LLC.
Stamford Hospital
Jane B. Weyl

Nancy Better

Marianne Ho Barnum
Breast Cancer Alliance Inc.
Figure Skating in Harlem
Greenwich Library
Kristy L. Harteveltd
Peggy E. Kalb
Page Knox
Sylvia and Leonard Marx
Foundation
Deborah Nielsen
Planned Parenthood of
Southern New England, Inc.
Dana Rogers
Bettina Routh
Jeanne Savitt
Lisa G. Stuart
Nancy Sarnoff Williams
Nancy S. Zisson

Michelle Binnie

Breast Cancer Alliance Inc.
Amy Dana
Karen Drakos
L. Scott Frantz
Page Knox
Virginia Lyddane
Deborah Nielsen
Anne Ogilvy
Planned Parenthood of
Southern New England, Inc.

Emily Pleasants Sternberg
Lisa G. Stuart
Elizabeth Walker

Anne Brewer

Westchester Wildcats

Eunice Burnett

Arch Street, The Greenwich
Teen Center
Audubon Connecticut
Jennifer Adams Baldock
Breast Cancer Alliance, Inc.
Nancy T. Broadbent
Patricia Caffray
Jill Coyle
Judith Donahue
Laurie Girsky
Jodie W. King
Fiona Kingery
Nancy H. Marshall
Lisa G. Matthews
Suzanne Peisch
Planned Parenthood of
Southern New England, Inc.
Lynn Quinn

Nick Cavatara

Valerie Wayne

Courtney Combe

Rita Fine

Susan Danaher

Ellen G. Barolak
Jane O. Brash
Margaret S. Cheever

Denise C. Doria

Agneta Benzon
Donna E. Coletti
The DeLuca Construction
Company
KAF Manufacturing Company, Inc.
Kaye & Hennessey, LLC
Laurel House
Rhonda McKeever
Walter J. McKeever & Company
The Resource Foundation, Inc.
University of Saint Joseph

Susan Evans

Michael Bushnell
Dedee Z. Rigg
Elizabeth O. Savage
Karen Terrell
Nina Weld

Ruth Fattori

PepsiCo, Inc.

Tracy Holton

Avon Theater Film Center, Inc.
Rebecca A. Gillan
John and Kelly Hartman
Foundation
Patricia H. Murphy
Anne M. Niemeth
Joy M. Patafio
Alka Thukral

Mary Jacobson

Maxine K. Armstrong
Ellen Avellino
Jane. M. Batkin
Nancy Cuniffe
Jane Frank
Frosty Friedman
Shannon Green
Greenwich Library
Eleni Henkel
Elizabeth Newman
Alicia and Peter Pond

Mary Jeffery

Americares
Connecticut Against Gun Violence
Jill Coyle
L. Scott Frantz
Kristy L. Harteveltd
Mary and Kim Jeffrey
Peggy E. Kalb
Marie-France Kern
Network For Good
Kate F. Osman
Nancy and Robert Risman
Family Foundation
Shelby M. Saer
Nina Weld

Romelle Jones Maloney

East Tennessee State University
Barbara A. Ward

Cyndi Koppelman

Robert Mittman
Joan A. Noto

Nisha Kumar Behringer

Brunswick School
Haley Elmlinger
Amy O. Goodfriend

Erin Lamb

Brian Lamb

Dee Mayberry

Susan V. Arturi
Jill Coyle
Go Figure Barre Studios
Greenwich Library
Eleni Henkel
Virginia A. Hughes
Page Knox
Deborah Nielsen
Nancy and Robert Risman
Family Foundation
Lisa F. Quackenbush
Shelby M. Saer
Kathleen Stack
Nina Weld

Anne Noonan

Ellen Avellino
Dalio Foundation, Inc.
L. Scott Frantz
Catherine A. Gates
Judy Higgins
Virginia Lyddane
River House Adult Day Center
Karen Terrell
John Watling

Suzanne Prunier

Arch Street, The Greenwich
Teen Center
Dick Blair
Nancy Cuniffe
Jean A. DeNunzio
Judith Donahue

L. Scott Frantz
Judy Gordon
Judy Higgins
Jerry Hupy
Joan S. Kadlec
Linda Lewis
Julie P. McGrath
Christy Prunier
Danielle Prunier
River House Adult Day Center

Deborah Royce

Colleen G. Hempleman

Adrienne Singer

Jane Condon
Miriam Landsman

Lila Snyder

McKinsey & Company

Stacey Tisdale

Patricia Litzen

Christina Vanderlip

Colleen G. Hempleman

Judith Wertheimer

Bruce Museum, Inc.
Ann Dietz
Virginia Lyddane
Peggy N. Marx
Hillary McGuire
Linda Z. Munger
Anne Pfetsch
River House Adult Day Center
Jane S. Stricker

IN MEMORY OF

Barry Nova

Mamie I. Lee

Betty Grosse

Ann Kepcke

Max Weave

Daniel Tredwell

YWCA GREENWICH STAFF

Mary Lee A. Kiernan
President and CEO

Peter Lasalandra
Chief Financial Officer

Kathy Seiden
Chief Advancement Officer

Nick Cavatara
*Head Coach, YWCA
Dolphins Swim Team*

Jeremy Cochran
*Age Group Head Coach,
YWCA Dolphins Swim Team*

Meredith Gold
*Director of Domestic
Abuse Services*

Jim Lucsky
Director of Facilities

Joan Mockler
*Director of Communications
and Racial Justice*

Michelle Pennino
*Director of Member
Services*

Bruce Semer
Director of Aquatics

Geri Smiles
*Director of Childhood
Education*

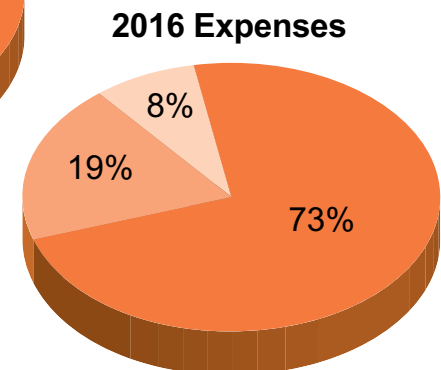
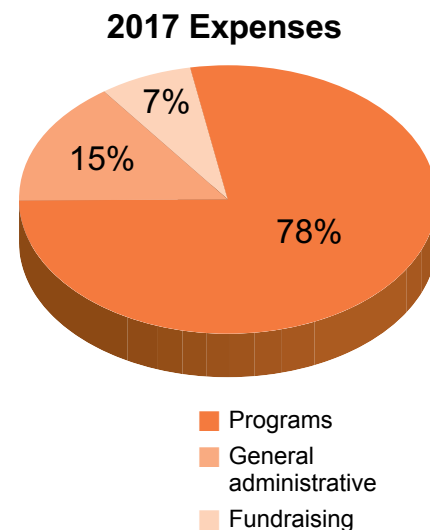
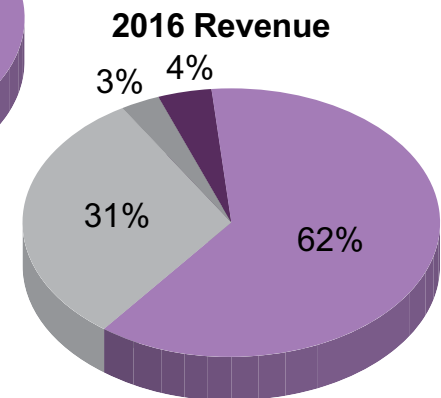
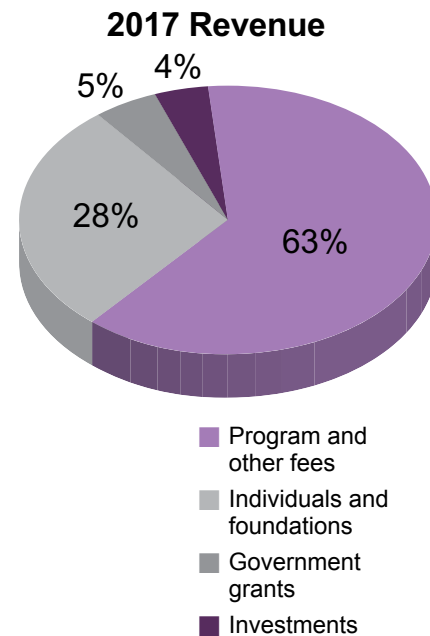
Arthur Smith
*Manager of Elementary
Age Programs*

Kyle Wirtz
*Director of Health
and Fitness*



FINANCIALS

	2017	2016
CURRENT ASSETS		
Cash and short term assets	\$418,845	\$512,128
Investments	\$8,894,298	\$8,390,096
Total current assets	\$9,313,143	\$8,902,224
LONG TERM ASSETS		
Fixed assets	\$5,011,414	\$5,038,754
Restricted investments	\$1,206,975	\$1,577,363
Total long term assets	\$6,218,389	\$6,616,117
Total assets	\$15,531,532	\$15,518,341
LIABILITIES & NET ASSETS		
Current liabilities	\$1,161,353	\$1,456,084
Long term liabilities	\$356,975	\$727,363
Net assets	\$14,013,204	\$13,334,894
Total liabilities & net assets	\$15,531,532	\$15,518,341
REVENUE		
Program and other fees	\$4,088,038	\$4,162,330
Individuals and foundations	\$1,792,528	\$2,117,915
Government grants	\$351,932	\$210,830
Interest and dividends	\$242,769	\$272,695
Total revenue	\$6,475,267	\$6,763,770
EXPENSES		
Programs	\$5,107,705	\$4,983,602
Management and general	\$948,311	\$1,278,048
Fundraising	\$459,929	\$575,283
Total expenses	\$6,515,945	\$6,836,933
Change in net assets from operations	(\$40,678)	(\$73,163)
NON-OPERATING GAINS/LOSSES		
Net gains/losses on investments	\$718,988	(\$82,344)
Change in net assets	\$678,310	(\$155,507)





eliminating racism
empowering women

ywca

greenwich

Girls with dreams

become women with vision.

YWCA Greenwich

259 East Putnam Avenue

Greenwich, CT 06830

203-869-6501

www.ywcagreenwich.org

Non-Profit Org.

U.S. Postage

PAID

Stamford, CT

Permit No. 13